

Mindalk Memo

16th February
2026



Dates to Remember...

Foundation Assessment

Wednesday 18th February
Wednesday 25th February

Official Opening Event

Wednesday 25th February

Community Picnic

Thursday 19th February
3PM - 4.30PM

Public Holiday

Monday 9th March - Labour Day

Harmony Day

Friday 20th March

Last Day Term 1

Thursday 2nd April - Early Dismissal 1.50pm

NAPLAN 2026

Wednesday 11th
Friday 13th
Monday 16th
Wednesday 18th
Thursday 19th
Friday 20th

Parent Payments 2026

Last week our annual Parent Payment information was shared with families. While this is a voluntary contribution it plays an important role in helping to resource our programs, provide equipment for our teaching teams and specialist offerings. This in turn helps our learners to access a quality curriculum.

Families can pay electronically through Xuno or by visiting our office. I thank you in advance for this valuable contribution to our new school community.

Official Opening Event

On Wednesday 25th February we will host special guests and visitors as part of our Official Opening Event. We will facilitate this visit with the Deputy Premier and Members for Western Metropolitan who will undertake a tour, visit classrooms and conduct a ceremony in the 'Heart of Mindalk'. Our parent community are welcome to attend, with the ceremony to begin at 10.20am.

Community Picnic

This Thursday will be our first whole-school event with a Community Picnic on our oval. We are hopeful our families can attend to mingle, chat and get to know each other and our staff.

As part of this event we will have visitors perform a cultural ceremony, a Welcome to Country shared by local Traditional Owners. This exciting and poignant event marks the beginning of this wonderful new school community.



Contact

E: mindalk.pseeducation.vic.gov.au
P: 7300 7122



At MINDALK Primary School every child has the right to be safe and feel safe. We commit to the safety and wellbeing of every child in our care.





Stop & Drop

A reminder to our community that our Stop & Drop area will be in use from this week.

Stop & Drop is located on Trickett Drive - this is an area that is used in the morning to assist in managing school traffic. From 8.00am until 9.30am and again at 2.30pm until 4.00pm, parents cannot park and leave their vehicle.

Parents are encouraged to talk to their children if you intend on using this space as part of the morning or afternoon routine. At the end of the school day, the children are to walk out to the front of the school and stand next to the staff member supervising to wait for their parents to arrive.

The Stop & Drop area is lined in red on Trickett Drive. Your cooperation is greatly appreciated.



School Council 2026

All government schools in Victoria have a school council. They are legally constituted bodies that are given powers to set the key directions of a school within statewide guidelines. In doing this, a school council is able to directly influence the quality of education that the school provides for its students.

The notice of election and call for nominations is open from today. If parents are interested in nominating themselves or another parent, please come and collect a form from our administration office in the Mirrnhang Building.

Student Awards



Foundation A Kabir Bhatia Tienze Finau	Foundation B Micah Tulimaiau Daisie Waterworth	Foundation C Ilkan Khadem Sahana Karthik	Foundation D Gurbaz Klair Jorawar Chauhan
YEAR 1/2A Tara Williams James Barbara	YEAR 1/2B Nihar Kandula Linda Vuang Tu Chung	YEAR 1/2C Keziah Pakoti Fepa'l Toavalu	
YEAR 3/4A Harper Kouck Lilliana Marleno	YEAR 3/4B Levi Aloui Zach Reforsado	YEAR 5/6A DeAndre Carew Daniel Nsoumbi	YEAR 5/6B Ksharaa Kharatmal Yuvraj Sandhu

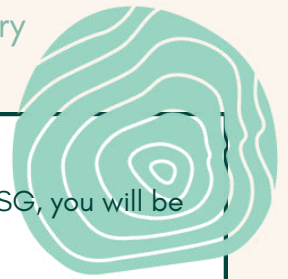
Contact

E: mindalk.pse@education.vic.gov.au
P: 7300 7122



At MINDALK Primary School every child has the right to be safe and feel safe. We commit to the safety and wellbeing of every child in our care.





SSGs

Student Support Group (SSG) meetings will take place in Week 8. If your child requires an SSG, you will be contacted via XUNO to select a suitable time.

Families do not need to attend both a Parent-Teacher Interview and an SSG – one meeting is sufficient.
What is an SSG?

A Student Support Group meeting brings together parents/carers and key school staff to discuss a student's learning, wellbeing, and support needs. The meeting focuses on reviewing progress, identifying strengths and areas for support, and planning appropriate adjustments or strategies to help the student succeed at school.

School-wide Positive Behaviour at Mindalk PS

At Mindalk Primary School, we use School Wide Positive Behaviour Support to create a safe, predictable and supportive learning environment. Students are explicitly taught what positive behaviour looks like and are supported to make respectful, safe and responsible choices in all areas of school life.

Our school values guide behaviour and relationships:

Learning – being curious and striving to improve

Adventure – trying new things and embracing challenges

Responsibility – making safe choices and taking ownership

Inclusion – showing kindness and ensuring everyone belongs

Mindalk Merits recognise students who demonstrate these values. Students earn merits for positive choices, effort and growth, and can save them to exchange for Treasures.

Merits	Treasures
15	Seat Swap for one day Line Leader for one day Special Stationery lucky dip Lunch with a peer for one time Show and Share something from home
20	A wristband is awarded when a student collects 20 tokens for the same school value - awarded by the Principal Team
30	VIP chair for the day Seat swap for the week Line Leader for one week
50	One icy pole Teacher Assistant for the day Assist a specialist teacher for one sessions
75	Assist in a Junior grade of your choice for the afternoon session Join another class of your year level for the day Join one extra session of your favourite specialist subject in the week
100	Have lunch in the conference room with up to four friends Have lunch with Blayne, Melissa or Belinda Front row seating at Assembly

Contact

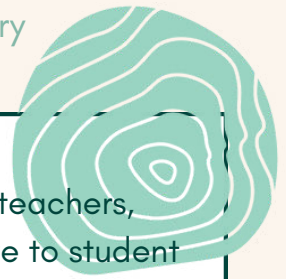
E: mindalk.pse@education.vic.gov.au

P: 7300 7122



At MINDALK Primary School every child has the right to be safe and feel safe. We commit to the safety and wellbeing of every child in our care.





Teaching & Learning at Mindalk

At Mindalk Primary School, our Teaching and Learning team works closely with teachers, students and families to ensure learning is purposeful, supported and responsive to student needs.

Our Teaching & Learning leaders are:

- Belinda Williams, Assistant Principal – Teaching & Learning
- Sarah Lochhead, Learning Specialist – Teaching & Learning

Together, we support high-quality teaching and learning practices across Foundation to Year 6.

A Strong Start at Mindalk

As a new school community, Mindalk Primary School has made a strong start to the year, grounded in the Victorian Teaching and Learning Model (VTLM 2.0). This means our classrooms are focused on clear learning goals, high expectations, predictable routines, and supportive relationships, ensuring every child feels safe, known and confident in their learning. Consistent classroom routines help students understand what to expect each day, allowing them to focus their energy on learning while building independence and wellbeing. From the very beginning, we are establishing evidence-based teaching practices that support both academic growth and positive learning behaviours.

NAPLAN 2026 – Information for Year 3 & Year 5 Families (Term 1, Week 7)

The National Assessment Program – Literacy and Numeracy (NAPLAN) is a national assessment undertaken by students in Years 3 and 5. It assesses essential skills in:

- reading
- writing
- conventions of language (spelling, grammar and punctuation)
- numeracy

NAPLAN allows families to see how their child is progressing against national proficiency standards. It is important to note that NAPLAN is one part of a broader assessment picture and does not replace the ongoing assessments and professional judgements made by teachers.

How students complete NAPLAN

- Year 3 students complete the Writing assessment on paper
 - All other assessments are completed online
 - Online tests are tailored (adaptive), meaning question difficulty adjusts based on student responses
- Students may find some questions challenging; this is expected and reflects deeper assessment pathways.

Participation and support

NAPLAN is inclusive, with reasonable adjustments available for students with disability. Adjustments are planned in consultation with families.

If a student is absent on a test day, catch-up testing will be arranged where possible.

Contact

E: mindalk.pse@education.vic.gov.au
P: 7300 7122



At MINDALK Primary School every child has the right to be safe and feel safe. We commit to the safety and wellbeing of every child in our care.





Mindalk NAPLAN Timetable

Wednesday 11 March - Writing

- Year 3: 9:00-9:40am
- Year 5: 9:00-9:42am

Friday 13 March - Reading

- Year 3: 9:00-9:45am
- Year 5: 9:00-9:50am

Monday 16 March - Language Conventions

- Year 3: 9:00-9:45am
- Year 5: 9:00-9:45am

Wednesday 18 March - Numeracy

- Year 3: 9:00-9:45am
- Year 5: 9:00-9:50am

Thursday 19 March - Catch-Up Testing

- Year 3: 9:00-10:00am
- Year 5: 9:00-10:00am

PARENT - TEACHER Interviews (Term 1, Week 9)

Families are invited to attend Parent-Teacher Interviews in Week 9, held in your child's classroom. These conversations provide an opportunity to discuss learning progress, wellbeing, and next steps.

Monday 23 March

- 8:10am - 8:20am
- 3:00pm - 4:10pm

Tuesday 24 March

- 8:10am - 8:20am
- 3:00pm - 4:10pm

Wednesday 25 March

- 8:10am - 8:20am
- 3:00pm - 4:10pm

Thursday 26 March

- 8:10am - 8:20am

Friday 27 March

- 8:10am - 8:20am

Maximum interview time: 10 minutes (to ensure equity for all families)

Specialist Learning Spaces

Specialist teachers will host interactive learning activities in their dedicated spaces, allowing families to sample learning from specialist subject areas.

Bookings and Interpreter Support

- **Bookings open via Xuno:** Monday 16 February (AM)
- **Bookings close:** Monday 16 March (AM)

Bookings and interpreter requests can be made via Xuno.

We look forward to continuing strong partnerships with families to support confident, capable learners at Mindalk.

Contact

E: mindalk.pseeducation.vic.gov.au
P: 7300 7122



At MINDALK Primary School every child has the right to be safe and feel safe. We commit to the safety and wellbeing of every child in our care.





NEWSLETTER

SCHOOL'S OUT!



AWESOME!

What a Fantastic Week at School's Out!

We had such an exciting and action-packed week at School's Out! The children enjoyed plenty of outdoor sports and games, getting active and building teamwork skills. We also got creative making slime and exploring a variety of fun arts and crafts activities.

It's been wonderful seeing everyone engaged, laughing, and trying new things!

If you'd like your child to join in on the fun, please visit our website to make a booking.

A friendly reminder for all parents to please ensure children bring a hat each day for outdoor play.

Wishing everyone a safe and happy weekend!



Next Weeks Menu!

Monday- Summer Grazing Platter

Tuesday- Fresh salad wraps

Wednesday- Pizza Scrolls

Thursday- Zucchini Muffins

Friday- Cheesy Nachos w Guacamole

**good
vibes**

Contact

E: mindalk.pseeducation.vic.gov.au

P: 7300 7122



At MINDALK Primary School every child has the right to be safe and feel safe. We commit to the safety and wellbeing of every child in our care.

