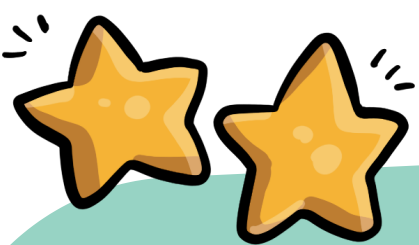
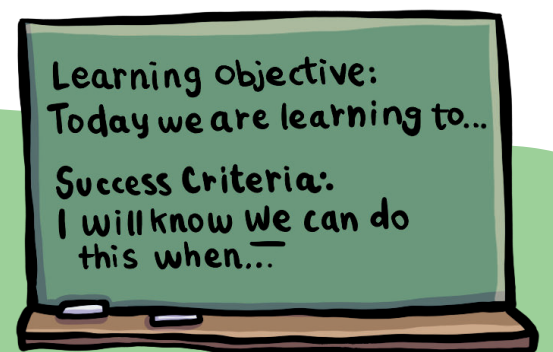
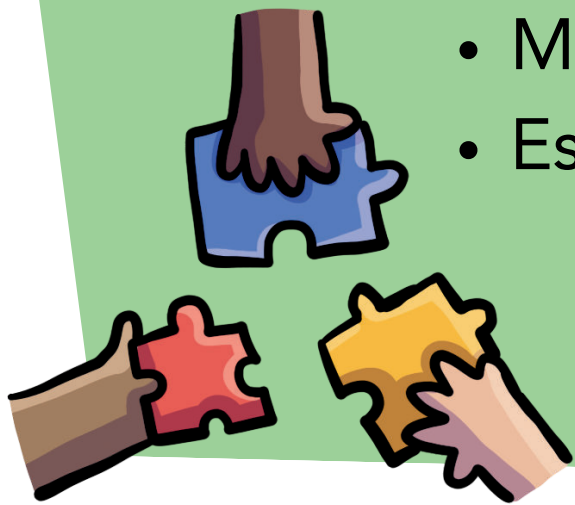


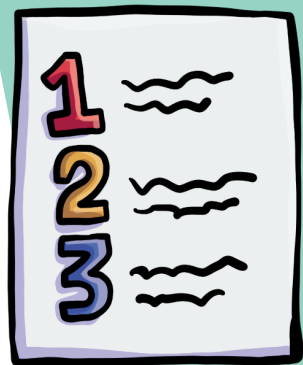
## Actions

- Embed a whole school curriculum map
- Planned 'Units of Learning'
- Mathematics curriculum progression and scope and sequences
- Establish a weekly planning sample for team support

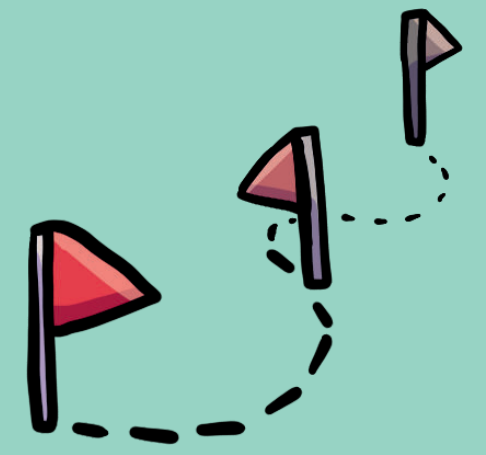


## Actions

- Design and deliver the Mindalk Responsive Teaching Instructional Model
- Targeted professional learning for staff
- Instructional coaching partnerships
- PLC inquiry cycles within teaching teams

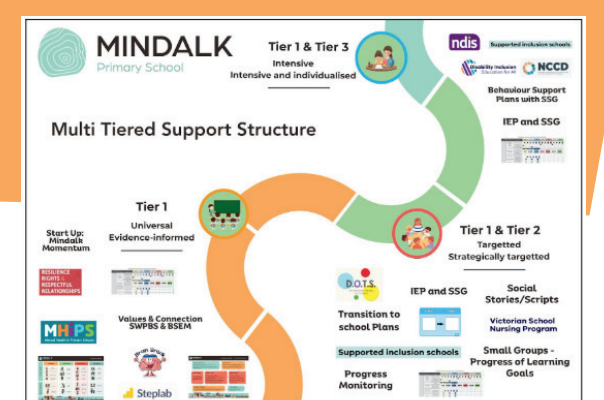


We use this skill when we...



## Actions

- Deliver professional learning for staff on MTSS and the Thrive Guide
- Embed referral and behaviour response pathways
- Develop the Wellbeing Team and SWPBS Steering Group
- Establish school routines and expectations
- Establish a communication strategy to promote our values and mission



Learning Adventure Responsibility Inclusion